

Plug-on PMT-2000 with high voltage supply

<i>Three common PMT pinouts</i>		
R6231, R6233	R1306, R1307	10-stage
P81T, N81T, P81L, N81L	P80T, N80T, P80L, N80L	P10T, N10T, P10L, N10L

*Common PMT pinouts; For each pinout we show a typical PMT and the high voltage divider options.*

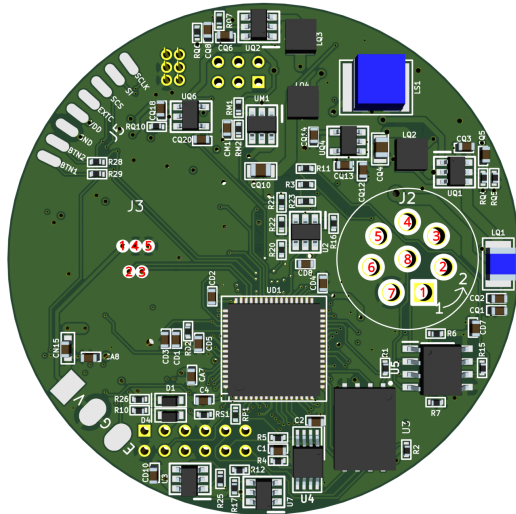
Note that the PMT-2000 and the SiPM-2000 share the same printed circuit board MCA-2000.



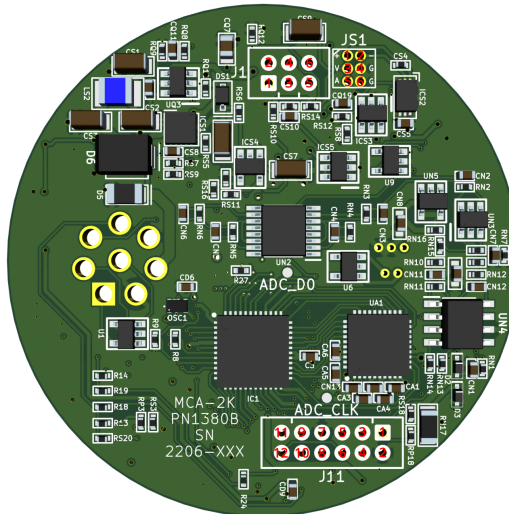
PMT-2000 top view

Connector J2, EN3P8MXPKG			Connector J3, PX0447		
#	Name	Description	#	Name	Description
1	SWD_IO	Software Debug Data	1	VD50	+ 5V power input
2	SWD_RST	Software Debug Reset	2	USB_DM	USB data minus
3	Pin3	N_Out50# or RS485_A	3	USB_DP	USB data plus
4	Pin4	GPIO_A3 or N_Out33 or PA2 (SiPM)	4	GND	Ground
5	Pin5	N_Out50 or RS485_B	5	GND	Ground
6	VD50	+ 5V power input			
7	GND	Ground			
8	SWD_CLK	Software Debug Clock			

Front side connectors pintout



PMT-2000 and SiPM-2000 PCB front view



PMT-2000 and SiPM-2000 PCB back view

<b>Connector J11, DF11-12</b>			<b>SiPM Connector JS1, DF11-6</b>			<b>Connector J1, DF11-6</b>		
<b>#</b>	<b>Name</b>	<b>Description</b>	<b>#</b>	<b>Name</b>	<b>Description</b>	<b>#</b>	<b>Name</b>	<b>Description</b>
1	Anode	PMT Anode	1	D+; cf Note 1	Temperature sensor D+	1~6	No connect	Mechanical supporting connector with no internal connections.
2	GND	GND	2	D-; cf Note 1	Temperature sensor D-			
3	VD33	3.3V supply for high voltage generator	3	HV	SiPM high voltage			
4	SPI0_MOSI	Serial Data for HV-DAC	4	GND	GND			
5	HV_CSB	Chip-select # for HV-DAC	5	GND	GND			
6	SPI0_CLK	Serial clock for HV-DAC	6	SiPM-Anode	SiPM Anode			
7	GND	Ground						
8	GND	Ground						
9	SPI0_MISO	Serial data from TC77 temperature sensor						
10	Vctrl	Analog high voltage control						
11	TCSB	Chip-select # for TC77						
12	SPI0_CLK	Serial clock for TC77						

*Back side connectors pinout*